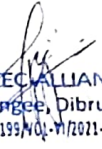
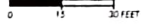




AS BUILT PLAN OF THREE STORIED EDUCATIONAL BUILDING "BLOCK-1" OF " DIBRU COLLEGE " AT CONVOY ROAD, BOIRAGIMOTH KACHARI GAON , DIST:- DIBRUGARH , ASSAM .

CLIENT: DIBRU COLLEGE, DIBRUGARH, ASSAM	CONSULTANT ARCHITEC ALLIANCE ARCHITECTS, ENGINEERS & PLANNERS.	SCHEDULE OF DOORS & WINDOWS D = SINGLE LEAF PANEL DOOR = 30'X70" W = FULLY GLAZED WINDOW = 40'X40" F.G. = FIXED GLASS = AS PER DESIGN V = ALL VENTILATORS ARE 1'-6" HIGH.	DESIGNER'S SIGN  ARCHITEC ALLIANCE Chowkidangee, Dibrugarh DM/TECH/RTP/199/NO.-VI/2021-22/2507
	CHOWKIDANGEE: DIBRUGARH. REGD. NO:- DM7 TECH/ RTP/199/ VOL-VII/2021-22/ 2902	AREA STATEMENT AREA OF GROUND FLOOR:- 3,977.77 SQFT. AREA OF FIRST FLOOR:- 3,977.77 SQFT. AREA OF SECOND FLOOR:- 3,977.77 SQFT.	
SCALE:- 		DRN. BY:- TRIDIB GOGOI	
OWNER'S SIGN  Principal অধ্যক্ষ Dibru College ডিব্রু মহাবিদ্যালয় Dist. Dibrugarh জিলা - ডিব্রুগড় Pin - 786003 পিন - ৭৮৬০০৩	APPROVED BY  Dr. Saikat Patra Mayor DIBRUGARH MUNICIPAL CORPORATION DIBRUGARH.		



AS BUILT PLAN OF THREE STORIED EDUCATIONAL BUILDING "BLOCK-2" OF " DIBRU COLLEGE " AT CONVOY ROAD, BOIRAGIMOTH KACHARI GAON , DIST:- DIBRUGARH , ASSAM .

CLIENT:
DIBRU COLLEGE, DIBRUGARH, ASSAM

CONSULTANT
ARCHITEC ALLIANCE
ARCHITECTS . ENGINEERS & PLANNERS .

SCHEDULE OF DOORS & WINDOWS
D = SINGLE LEAF PANEL DOOR = 36"x70"
W = FULLY GLAZED WINDOW = 40"x40"
F.G = FIXED GLASS AS PER DESIGN.
V = ALL VENTILATORS ARE 1'-6" HIGH.

DESIGNER'S SIGN

CHOWKIDINGEE : DIBRUGARH .
REGD . NO :- DM/TECH/ R1P/199/ VOL-VI/2021-22/ 2902

AREA STATEMENT
AREA OF GROUND FLOOR:- 7,691.80 SQFT.
AREA OF FIRST FLOOR:- 7,890.80 SQFT.
AREA OF SECOND FLOOR:- 7,890.80 SQFT.

SCALE:-



DRN . BY :-
TRIDIB GOGOI

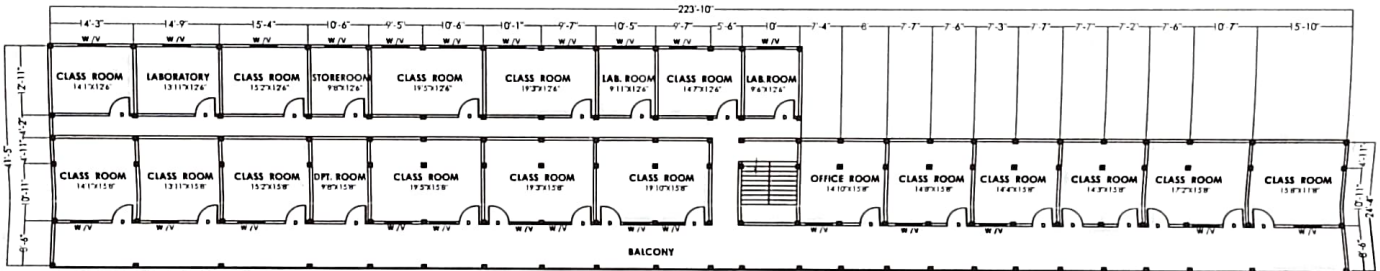
ARCHITEC ALLIANCE
Chowkidingee, Dibrugarh
DM/TECH/RTP/199/VOL-VI/2021-22/2902

OWNER'S SIGN

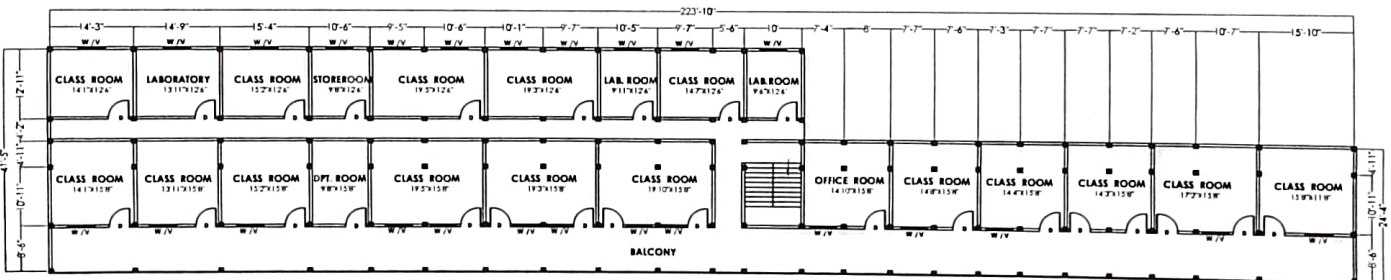
Principal অধ্যক্ষ -
Dibru College ডিব্ৰু মহাবিদ্যালয়
Dist. Dibrugarh জিলা - ডিব্ৰুগড়
Pin - 786003 পিন - ৭৮৬০০৩

APPROVED BY

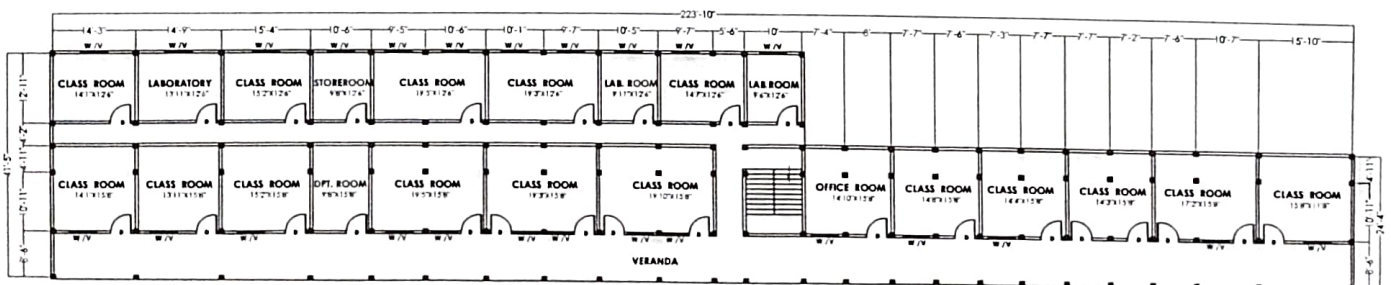
Dr. Saikat Patra
Mayor
DIBRUGARH MUNICIPAL CORPORATION
DIBRUGARH



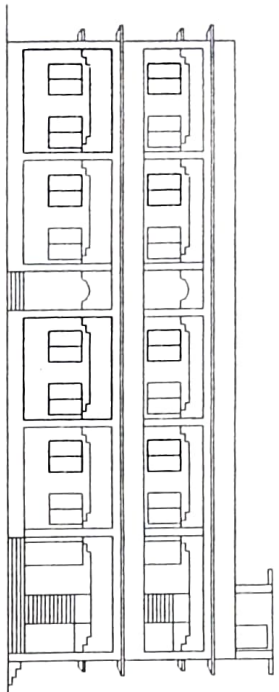
SECOND FLOOR



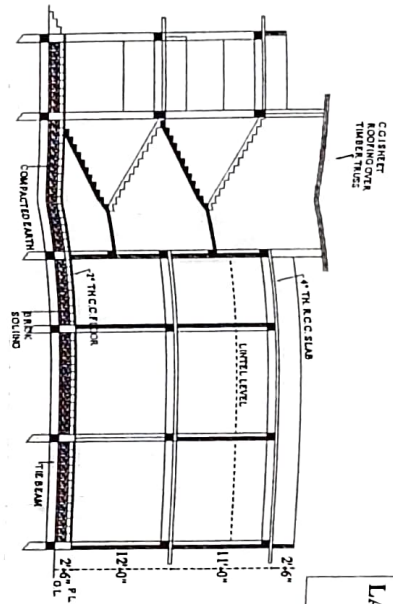
FIRST FLOOR



GROUND FLOOR



FRONT ELEVATION



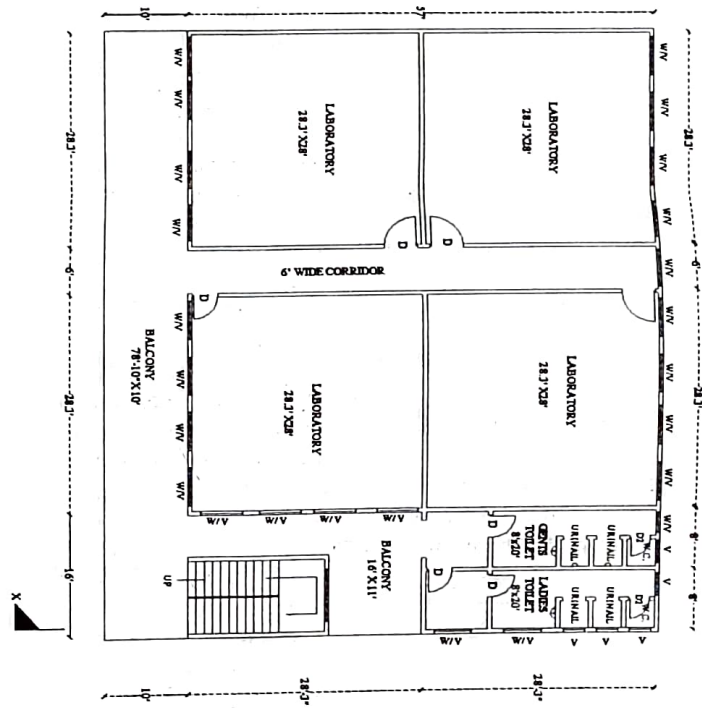
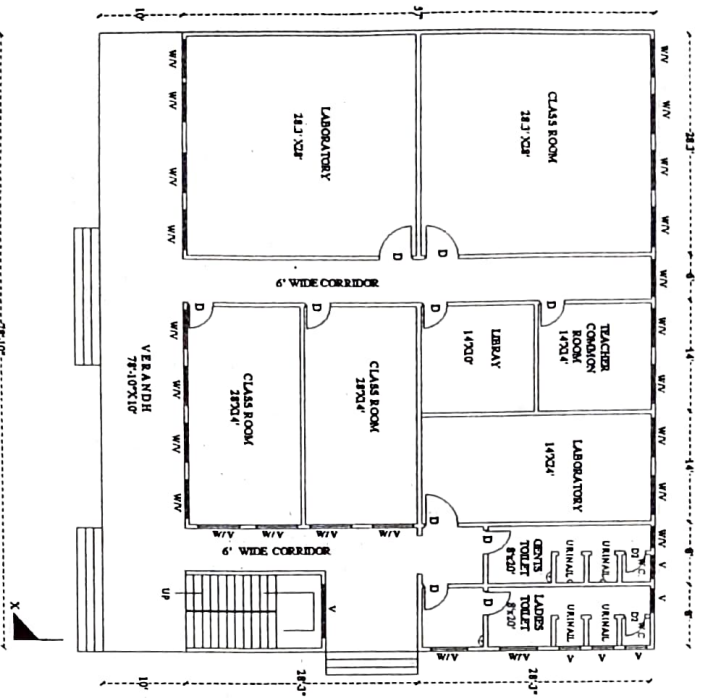
SECTION AT X-X

PROPOSED R.C. GROUND AND FIRST FLOOR
LABORATORY BUILDING OF DIBRU COLLEGE.
AT DIBRUGARH.

SCHEDULE OF DOOR & WINDOW

- DOORS : D = 4'-0" X 7'-0"
 D1 = 3'-0" X 7'-0"
- WINDOWS : W = 4'-0" X 4'-0"
- VENTILATORS : V = ALL HT. 20"

B.U.P. :-
GROUND FLOOR = 490.47 SQ. M (5279.60 SQ FT)
FIRST FLOOR = 490.47 SQ. M (5279.60 SQ FT)



Approved
D. Sankar Patra
Mayor
DIBRUGARH MUNICIPAL CORPORATION
DIBRUGARH

21/11/2017
P. DOWDERAH
Regd. Designer
South Municipal Board
DIBRUGARH

GROUND FLOOR PLAN
BUILT UP AREA : 490.47 SQ.M (5279.60 SQ.FT)

FIRST FLOOR PLAN
BUILT UP AREA : 490.47 SQ.M (5279.60 SQ.FT)

DESIGNER :- *21/11/2017*
P. DOWDERAH
(REGD. DESIGNER)
PADUNA NAGARBYE LANE - II
ROAD NO. 204/205/206/207/208/209/210
DIBRUGARH 781011
Email ID: p.dowderah@gmail.com